

# Climate Adaptation Plan



Minehead  
and Coast  
DEVELOPMENT TRUST



Somerset  
Wildlife Trust

Funded by



---

**MINEHEAD  
2025**

# CONTENTS



## P.4

Executive Summary

## P.5

Introduction

## P.6

Shaping Minehead's Plan

## P.7

Priority 1 - Improving and increasing green spaces

[1.1 - Increase tree planting](#)

[1.2 - Develop 'green corridors' throughout town](#)

[1.3 - Partner with organisations to expand green areas](#)

[1.4 - Secure funding and partnerships for green initiatives](#)

## P.16

Priority 2 - Adapting to flooding

[2.1 - Implement sustainable drainage systems \(SuDS\)](#)

[2.2 - Improve existing drainage maintenance](#)

[2.3 - Implement natural flood management techniques](#)

[2.4 - Enhance community flood resilience](#)

[2.5 - Seek funding and partnerships](#)

# CONTENTS



## P.27

Priority 3 - Encouraging community-driven climate action

[3.1 - Raise awareness and share knowledge on climate issues](#)

[3.2 - Promote community involvement in environmental initiatives](#)

[3.3 - Improve community communication systems](#)

[3.4 - Partner with educational institutions](#)

## P.36

Priority 4 - Promoting sustainable development

[4.1 - Improve existing housing](#)

[4.2 - Advocate for climate-resilient new developments](#)

[4.3 - Engage businesses in sustainability](#)

[4.4 - Implement innovative funding and incentive schemes](#)

## P.45

[Conclusion](#)

## P.46

[Acknowledgements](#)

## P.47

[Appendix](#)

# EXECUTIVE SUMMARY

The climate emergency poses many threats to Minehead. Winters are becoming warmer and wetter, increasing flooding risks. Hotter and drier summers are increasing the risk of droughts, heatwaves and wildfires.

Through collaborative events, residents have identified four key themes for how Minehead should adapt to the changing climate:



## Improving and increasing green spaces



## Adapting to flooding



## Encouraging community-driven climate action



## Promoting sustainable development



### The resulting plan:

- reflects the priorities of Minehead's community.
- outlines adaptation actions under each key theme.
- gives guidance on taking action.
- highlights the co-benefits of each priority, such as improving water quality or health and wellbeing.



For each strategy, potential projects and organisations have been assigned, however, it is important to note these are unconfirmed partners.

Explore this plan to discover the actions you and your community can take to adapt to climate change. Your support and contributions will be vital to ensure we can build a better adapted, resilient and connected future for Minehead.

**To find out how you can get more involved contact:  
Zara Aitken - [zara@mineheadandcoast.org.uk](mailto:zara@mineheadandcoast.org.uk)**

# INTRODUCTION

Since June 2024, local residents, Minehead and Coast Development Trust (MCDT) and Somerset Wildlife Trust (SWT) have been working together to address the following challenge:

**"How can we help Minehead adapt to climate change?"**

The impacts of the climate emergency are already unfolding. Sea levels are rising and flooding, extreme heat, droughts and wildfires are all likely to happen more often in Somerset. Thankfully, there are lots of ways that communities can act together to be better prepared for the changes and build a positive future where people and nature can thrive. Climate change is already impacting Minehead, there is an urgent need to adapt.



SWT has been raising awareness of adaptation and encouraging communities across the county to develop plans. In a unique collaboration with MCDT, we began to develop a locally tailored Climate Adaptation Plan for Minehead.



Beginning with a Climate Adaptation Workshop event at Minehead Community Centre, the [‘Act to Adapt’](#) process has brought together residents, community groups, councillors and SWT’s [Climate Adaptation](#) team, to:

- Talk about climate change projections for Somerset.
- Discuss the need for adaptation in Minehead.
- Co-create a bespoke Climate Adaptation Plan, using the [Climate Adaptation Toolkit](#) for communities.

This plan shares the key themes and priority adaptation actions chosen by Minehead residents, and offers advice on how to make these actions happen. We have also highlighted the adaptation benefits of each priority, and additional ‘co-benefits’ – such as mitigating climate change or supporting biodiversity – to demonstrate how they will support Minehead in becoming better adapted and more resilient to our changing climate.

# SHAPING MINEHEAD'S PLAN



Following our initial events, we compiled participants' suggested adaptation priorities and actions, and turned these into a Draft Climate Adaptation Plan for Minehead. To ensure that the plan better reflects the needs and priorities of Minehead, we organised a consultation period to gather feedback on the existing priorities and ideas for new adaptation actions from more residents.

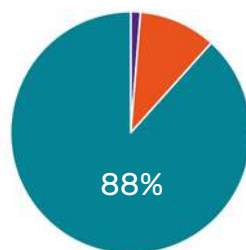
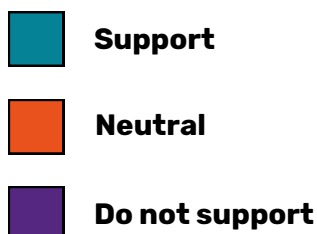


In August and September 2024, we held two in-person consultations where residents can learn more about climate adaptation, read the draft plan, and help shape the full plan by completing a survey and sharing their ideas. For those unable to attend these events, we also had an online survey and opportunities to provide more detailed feedback by email.

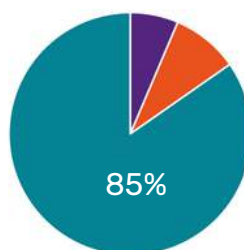


Survey respondents reported which of the adaptation priority areas they felt were most important for Minehead. The results showed equal favour (26.6%) for the first three strategies, with strategy four being prioritised by the remaining 20.2%.

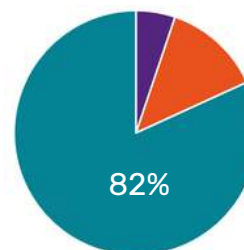
78 respondents also provided feedback on how strongly they **support** each priority:



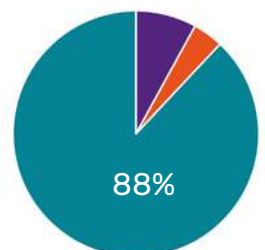
Green spaces



Adapting to Flooding



Community Action



Sustainable Development

See Appendix I for more information about consultation responses.

To ensure this plan stays flexible and best serves Minehead, residents should have regular opportunities to suggest additions, changes and improvements. If you have any suggestions for the plan, get in touch at: [zara@mineheadandcoast.org.uk](mailto:zara@mineheadandcoast.org.uk)

# 1. IMPROVING AND INCREASING GREEN SPACES



Actions to improve and increase green spaces across Minehead could provide the following adaptation benefits and co-benefits to the local community:



# 1.1 - Increase tree planting



Where:	When:	Who:
<ul style="list-style-type: none"> <li>• North Hill</li> <li>• Land owned by Town Council</li> <li>• Irnham Road Recreation Ground</li> <li>• Alcombe playground</li> <li>• King George Playing Field</li> <li>• Blenheim Gardens</li> <li>• Periton Park</li> <li>• Culver Cliff</li> <li>• Exmoor National Park</li> <li>• Local landowners</li> <li>• Private residences</li> <li>• Potential parcel of land in Alcombe</li> </ul>	<p style="text-align: center;">TBC</p>	<ul style="list-style-type: none"> <li>• Minehead Town Council</li> <li>• Woodland Trust</li> <li>• Blenheim Gardens volunteers</li> <li>• West Somerset Green Forum</li> <li>• Exmoor National Park Authority</li> <li>• Reimagining the levels</li> <li>• Somerset Rivers Authority (SRA)</li> <li>• Farming and Wildlife Advisory Group (FWAG)</li> </ul>



## **How:**

**Identify suitable planting locations:** Work with the town council, local landowners, and community groups to identify areas suitable for tree planting. Consider parks, streets, school grounds, and unused land. Conduct soil and drainage surveys to ensure chosen locations are appropriate for long-term tree growth.

**Develop a planting plan:** Create a comprehensive plan that outlines where different tree species will be planted. Choose a variety of native trees like Hazel, Rowan, Crab apple, and Hawthorn that are well-suited to Minehead's climate and soil conditions. Consult with local arborists or horticultural experts to ensure the best selection for each location, taking into account drainage issues and flood risk management.

**Create a community orchard:** Identify a suitable location for a community orchard. Work with local experts to select appropriate fruit tree varieties that will thrive in Minehead's climate. Establish a community group to manage and maintain the orchard, and develop guidelines for fruit harvesting and distribution.

**Engage the community:** Organise volunteer planting days to involve residents in the tree planting efforts. This can help build community ownership and ensure long-term care of the trees. Provide training on proper planting techniques and aftercare. Create educational materials and signage explaining how different tree species contribute to water management and flood risk reduction.

**Establish maintenance plans:** Develop long-term maintenance plans for all newly planted trees. This should include watering schedules, pruning, and monitoring for pests or diseases. Assign responsibilities to council staff, community groups, or volunteers.

**Monitor and evaluate:** Regularly assess the health and growth of newly planted trees, as well as their impact on local drainage and flood risk. Use this information to refine future planting and maintenance strategies.

**Promote wildlife:** Raise awareness of the nature benefits of planting trees, e.g., how woodland supports wildlife. By highlighting the positive impacts for fauna, tree planting activities may invite further local engagement.



## **Useful links:**

1. [More trees - BANES case study](#)
2. [Free trees for schools and communities - Woodland Trust](#)
3. [Tree planting advice - Woodland Trust](#)
4. [Managing and caring for trees - Tree Council](#)

# 1.2 - Develop 'green corridors' throughout town



Where:	When:	Who:
<ul style="list-style-type: none"> <li>• North Hill</li> <li>• Potential parcel of land in Alcombe</li> <li>• Land owned by town council</li> <li>• Irnham Road Recreation Ground</li> <li>• Alcombe playground</li> <li>• King George Playing Field</li> <li>• Blenheim Gardens</li> <li>• Periton Park</li> <li>• Culver Cliff</li> <li>• Verges</li> <li>• Alcombe Children’s Centre</li> <li>• West Somerset Railway</li> <li>• Private residences</li> </ul>	<p>TBC</p>	<ul style="list-style-type: none"> <li>• Minehead Town Council</li> <li>• Minehead and Coast Development Trust (MCDT)</li> <li>• Blenheim Gardens volunteers</li> <li>• West Somerset Green Forum</li> <li>• West Somerset Railway</li> <li>• Somerset Wildlife Trust (SWT)</li> </ul>

## How:

**Map green spaces:** Create a map of Minehead's existing green spaces, including parks, gardens, and natural areas. Design a network of green corridors that connect larger natural areas throughout Minehead. Consider using existing features like road verges, waterways, and unused spaces to create these links.

**Engage stakeholders:** Organise meetings with local residents, businesses, and community groups to gather input and support for the green corridor project. Address any concerns and incorporate community ideas into the plans. Create informational signage along the green corridors explaining their purpose and benefits. Organise guided walks or events to engage the community with these new green spaces. Use local media and social platforms to share progress and success stories.

**Encourage wildlife gardening:** Promote leaving areas wild, creating deadwood piles, and growing diverse native plants. Encourage ideas such as planting species-rich mini-meadows using local wildflower seeds, installing bee hotels and hedgehog highways, creating a small pond or birdbath for varied habitats, and allowing some weeds to flourish for insects. For biodiversity-boosting garden advice, contact [teamwilder@somersetwildlife.org](mailto:teamwilder@somersetwildlife.org).

**Promote green roofs and walls:** Develop a green roof initiative for buildings along the corridor routes. Create an information pack for building owners explaining the benefits and installation process. Offer incentives or grants for green roof installations, particularly for public and commercial buildings. Identify public buildings suitable for green walls along the corridor routes. Collaborate with building managers to implement green wall projects. Find expertise on suitable plant species, installation methods, and maintenance requirements.

**Create wildflower meadows and grasslands:** Identify suitable areas along the planned corridors for wildflower meadows and diverse grasslands. Work with ecologists to select appropriate native seed mixes that support local wildlife and pollinators. Divide the project into manageable phases. Begin with high-impact, visible areas to generate enthusiasm and support for the project. Gradually extend the corridors over time.

**Develop maintenance and monitoring plans:** Create comprehensive maintenance schedules for each element of the green corridors, including wildflower meadows, green roofs, and walls. Assign responsibilities to council staff, contracted services, or community volunteer groups. Establish a system to monitor wildlife usage of the green corridors. This could involve regular surveys, citizen science projects, or partnerships with local wildlife groups. Use this data to refine and improve the corridors over time.



## Useful links:

1. [Why are wildlife corridors important? - Heart of England Forest](#)
2. [Create wildlife corridors - RSPB](#)
3. [Living roof, wall and roof-garden maintenance - Pritchard & Pritchard](#)
4. [Living wall maintenance - TUGC](#)
5. [Green walls information - Royal Horticultural Society](#)
6. [Green wall types - Architizer](#)
7. [Green walls: the ultimate guide - Exubia](#)



# 1.3 - Partner with organisations to expand green areas



Where:	When:	Who:
<ul style="list-style-type: none"> <li>• Supermarket car parks</li> <li>• School playing fields</li> <li>• Allotments</li> <li>• Regal Theatre (green walls)</li> <li>• Butlins</li> <li>• Alcombe Children’s Centre</li> </ul>	<p>TBC</p>	<ul style="list-style-type: none"> <li>• Minehead Town Council</li> <li>• Minehead and Coast Development Trust (MCDT)</li> <li>• Morrisons</li> <li>• Tesco</li> <li>• LIDL</li> <li>• Woodland Trust</li> <li>• Butlins Green Team</li> <li>• West Somerset Green Forum</li> <li>• Environment Agency (EA)</li> <li>• Somerset Council</li> <li>• National Trust</li> </ul>

## How:

**Engage with schools:** Contact local school administrators to discuss enhancing outdoor learning spaces and playgrounds. Organise meetings with teachers, students, and parents to gather ideas and support. Engage youth through events, such as nature trails and creating bug hotels.

**Collaborate with supermarkets:** Approach local supermarket managers with proposals for adding trees and green spaces to their car parks. Present the benefits of green spaces, such as improving customer experience and environmental impact.

**Increase tree-lined streets:** Conduct a street survey to identify suitable locations for new trees. Consult with local arborists to select appropriate tree species for street planting. Develop a phased planting plan, prioritising areas with the greatest need or impact. Engage local residents in the tree planting process, offering them a say in species selection where possible.

**Encourage green walls on businesses:** Create an information pack on green walls tailored for local businesses. Host workshops or seminars to educate business owners on the benefits and implementation of green walls. Offer technical support and advice on suitable plant species and maintenance requirements.

**Promote nature-based solutions:** Develop a comprehensive guide on nature-based solutions for businesses, including examples of successful implementations. Organise site visits to showcase local best practices. Create a recognition programme or award for businesses that implement significant green improvements.

**Monitor and celebrate progress:** Implement a system to track the increase in green spaces across different sectors. Regularly communicate progress to the community through local media and social platforms.

**Improve awareness on management:** Collaborate with organisations to manage green spaces, educating locals on their benefits, such as improving mental health. Groups could be encouraged to adopt empty spaces for planting and active management.



## Useful links:

1. [Free trees for schools and communities - Woodland Trust](#)
2. [A guide to planting street trees - City of Trees](#)
3. [Guide to young tree establishment - Arboricultural Association](#)
4. [Green walls information - Royal Horticultural Society](#)
5. [Plastic free businesses - Plastic Free Minehead](#)

# 1.4 - Secure funding and partnerships for green initiatives



When:	Who:
TBC	<ul style="list-style-type: none"> <li>• Minehead Town Council</li> <li>• Local supermarkets</li> <li>• Local businesses               <ul style="list-style-type: none"> <li>◦ Butlins</li> </ul> </li> <li>• Environmental Land Management Scheme (ELMS)</li> <li>• West Somerset Green Forum</li> <li>• Somerset Council</li> <li>• Morrisons funding (£10,000)</li> <li>• Lush charity pot</li> <li>• Hinkley Point grants</li> <li>• Chestnut Fund - grants for conservation</li> <li>• Local landowners</li> </ul>

---

## **How:**

**Identify potential partners:** Research and compile a list of environmental organisations, both local and national, that could support nature projects in Minehead. Consider groups like Somerset Wildlife Trust, Woodland Trust, and local conservation societies. Partner with local businesses or conservation groups for tree and plant donations or discounts. Consider establishing a "sponsor a tree" programme for residents and businesses.

**Engage with environmental organisations:** Reach out to identified organisations to discuss potential collaborations. Arrange meetings to present Minehead's green initiative plans and explore how these align with the organisations' objectives. Develop proposals for joint projects or funding applications.

**Research funding opportunities:** Regularly scan for grants and funding schemes related to tree planting, green space creation, and environmental improvement. Create a calendar of application deadlines to ensure timely submissions.

**Develop compelling funding proposals:** Craft well-researched, persuasive funding applications that clearly demonstrate the benefits of Minehead's green initiatives. Include data on environmental impact, community engagement, and long-term sustainability of projects.

**Collaborate with landowners:** Identify local landowners with significant green spaces or potential for environmental improvements. Arrange meetings to discuss environmental management schemes and how collaboration could benefit both parties. Provide information on available grants or incentives for land management. Discuss and educate about the importance of sustainable development.

**Organise community fundraising events:** Plan community events specifically aimed at raising funds for green initiatives. This could include sponsored walks, tree planting days, or eco-fairs. These events can also serve to raise awareness and garner community support.

**Identify potential projects:** Host consultations to discover what residents would like to see in Minehead. For example, our consultations have raised interest in more trees on the seafront and additional dog-friendly green spaces.



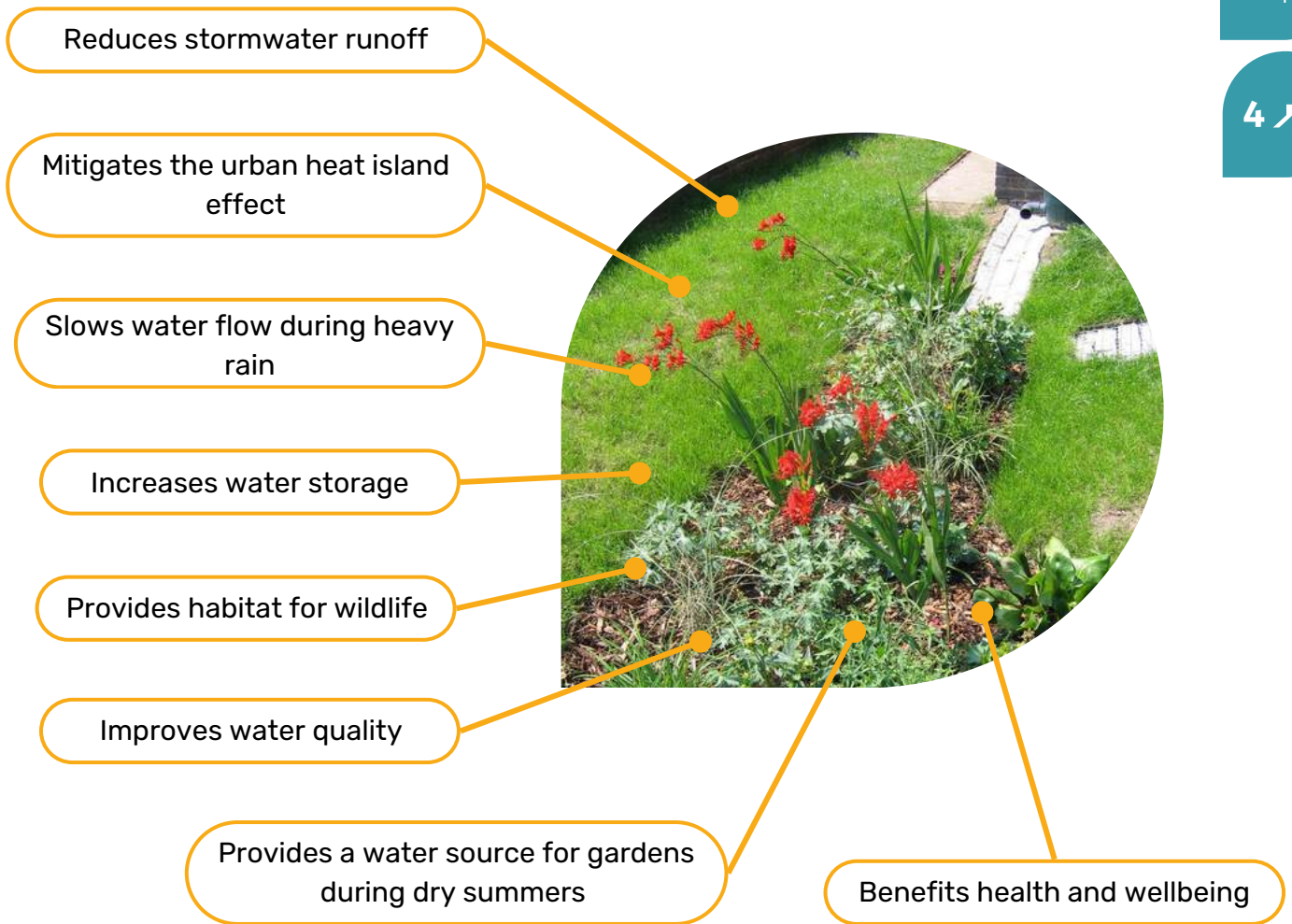
## **Useful links:**

1. [Free trees for schools and communities - Woodland Trust](#)
2. [Plastic free businesses - Plastic Free Minehead](#)
3. [Grants available to help businesses 'Go Green' - Somerset Council](#)
4. [Grants - Going Green](#)

# 2. ADAPTING TO FLOODING



Actions to reduce flooding risks in Minehead could provide the following adaptation benefits and co-benefits to the local community:





# 2.1 - Implement sustainable drainage systems (SuDS)



Where:	When:	Who:
<ul style="list-style-type: none"> <li>• Private residences</li> <li>• Local supermarkets</li> <li>• Council-owned car parks</li> </ul>	<p>TBC</p>	<ul style="list-style-type: none"> <li>• Minehead Town Council</li> <li>• Somerset Drainage Board Consortium</li> <li>• Butlins Green Team</li> <li>• Somerset Council</li> <li>• Wessex Water</li> </ul>

---

## **How:**

**Develop a SuDS strategy:** Create a comprehensive plan for implementing SuDS across Minehead, identifying priority areas and potential projects. Consult with local water management experts and the Environment Agency to ensure the strategy aligns with broader flood management plans.

**Install rain gardens:** Identify suitable public spaces for rain garden installation. Develop guidelines and planting recommendations specific to Minehead's climate and soil conditions. Create demonstration rain gardens in high-visibility areas to showcase their effectiveness and aesthetic value.

**Promote residential rain gardens:** Develop an information pack for homeowners on creating rain gardens, including design tips, plant suggestions, and maintenance advice. Organise workshops to teach residents how to install their own rain gardens. Consider offering incentives or grants for homeowners who implement rain gardens.

**Bulk ordering of water butts:** Establish a partnership with local businesses and organisations, like Wessex Water, to promote and distribute water butts. Negotiate bulk purchasing deals to reduce costs. Create an awareness campaign to educate the community on the benefits of water harvesting.

**Encourage permeable paving:** Develop resources promoting the use of permeable paving. Create an information pack for developers, businesses and homeowners on permeable paving options and their benefits. Consider offering incentives for retrofitting existing impermeable surfaces with permeable alternatives.

**Target new builds for SuDS:** Collaborate with the planning department to require SuDS integration in all new developments. Provide developers with resources and guidance on effective SuDS implementation.

**Engage the community:** Organise public events and exhibitions to educate residents about SuDS and their benefits. Use social media and local press to share success stories and tips for implementing SuDS at home.

**Monitor and evaluate:** Implement a system to track the installation and effectiveness of SuDS across Minehead. Regularly assess their impact on local flood risk and water quality.



## **Useful links:**

1. [How to install a water butt - B&Q](#)
2. [How to build a pond - The Wildlife Trusts](#)
3. [Pond creation toolkit - Freshwater Habitats Trust](#)
4. [Permeable paving - PavingExpert](#)
5. [Sustainable drainage systems - Susdrain](#)

## 2.2 - Improve existing drainage maintenance



Where:	When:	Who:
<ul style="list-style-type: none"> <li>The Avenue</li> </ul>	<p>TBC</p>	<ul style="list-style-type: none"> <li>Minehead Town Council</li> <li>Somerset Drainage Board Consortium</li> <li>Butlins Green Team</li> <li>Somerset Council</li> <li>Wessex Water</li> <li>National Farmers Union (NFU)</li> <li>Farming and Wildlife Advisory Group (FWAG)</li> </ul>

## How:

**Develop a comprehensive drainage maintenance plan:** Create a detailed plan that outlines all drainage systems in Minehead, including street drains, culverts, and rhynes. Map these systems and identify areas prone to blockages or flooding. Organise regular, comprehensive checks of the main culvert system. Engage professional surveyors/drainage experts to assess the condition of culverts and identify any areas requiring repair.

**Establish a regular clearing schedule:** Implement a routine maintenance schedule for clearing blocked drains, with increased frequency for high-risk areas, such as the seafront affected by sand, as well as during Autumn with falling leaves and higher rainfall. Coordinate with local council services or contractors to ensure consistent execution.

**Create a rhyne maintenance programme:** Develop a systematic approach to keeping rhynes clear of debris. Work with local landowners and the Environment Agency to ensure proper maintenance while preserving the ecological value of these watercourses.

**Engage with the community:** Organise awareness campaigns to educate residents about the importance of keeping drains clear. Encourage community involvement in reporting issues and, where appropriate, in maintenance activities.

**Coordinate with flood risk management:** Ensure that drainage maintenance efforts are aligned with broader flood risk management strategies. Liaise regularly with the Environment Agency and other relevant bodies.

**Monitor and evaluate effectiveness:** Implement a system to track the frequency and effectiveness of maintenance activities. Use this data to refine the maintenance schedule and identify areas requiring more attention.

**Review and update regularly:** Conduct annual reviews of the drainage maintenance plan, incorporating lessons learned and adapting to any changes in local conditions or best practices.



## Useful links:

1. [Drainage and wastewater management plan - Wessex Water](#)
2. [Drains and gullies - Somerset Council](#)
3. [Sustainable drainage systems \(SuDS\) - Susdrain](#)

## 2.3 - Implement natural flood management techniques



Where:	When:	Who:
<ul style="list-style-type: none"> <li>• Wetlands along Seaward Way</li> <li>• Golf course</li> <li>• The Parks, Minehead</li> <li>• 'Old pond'</li> <li>• Culver Cliff</li> <li>• Dunster Marsh Farm</li> </ul>	<p>TBC</p>	<ul style="list-style-type: none"> <li>• Minehead Town Council</li> <li>• Somerset Drainage Board Consortium</li> <li>• Butlins Green Team</li> <li>• Environment Agency (EA)</li> <li>• Wessex Water</li> <li>• Somerset Council</li> <li>• Exmoor National Park Authority</li> <li>• Somerset Rivers Authority (SRA)</li> <li>• National Trust</li> <li>• Somerset Wildlife Trust (SWT)</li> </ul>

---

## How:

**Develop a comprehensive natural flood management (NFM) strategy:** Work with hydrologists and ecologists to create a holistic plan for implementing NFM techniques across Minehead and its surrounding areas.

**Create a rain garden in the park:** Design and implement a rain garden in the river through the park before The Avenue. Engage local landscape architects and hydrologists to ensure effective design and integration with existing park features.

**Implement 'Slow the Flow' measures:** Identify suitable locations on hills and slopes for tree planting to slow water runoff. Create a plan for increasing the number of ponds or cascading water features in strategic locations to manage water flow. Ensure these features are both functional for flood management and attractive as community assets. Prioritise 'The Parks' area for initial implementation of these measures.

**Encourage river and stream restoration:** Work with the EA and local landowners to identify sections of rivers and streams that could be restored to more natural, meandering courses. Develop plans for re-naturalising these watercourses to slow water flow.

**Establish controlled flooding areas:** Identify appropriate locations for controlled flooding areas. Consult with flood management experts to design these areas effectively. Engage with local communities to explain the purpose and benefits of these measures.

**Collaborate with Exmoor National Park:** Establish a partnership with Exmoor National Park Authority to develop coordinated upland water management strategies. Regular meetings and joint planning sessions will ensure a cohesive approach to water management.

**Increase tree planting:** Promote tree planting as an effective NFM technique. Work with the town council, local landowners, and community groups to identify areas suitable for tree planting. Discourage tree removals unless necessary.

**Maintain and expand reed beds:** Work with local conservation groups to maintain existing reed beds, particularly in areas like Seaward Way Reserve. Identify additional suitable locations for reed bed creation or expansion.

**Monitor and evaluate effectiveness:** Implement a robust monitoring system to assess the impact of NFM measures on local flood risk and water quality. Use this data to refine and improve the NFM strategy over time.



## Useful links:

1. [Managing water in our towns and cities - UK Rain Gardens Guide](#)
2. [Natural flood management - West Cumbria Rivers Trust](#)
3. [How nature can help prevent flooding - The Wildlife Trusts](#)
4. [Pond creation toolkit - Freshwater Habitats Trust](#)
5. [Useful information about Somerset flooding - Sustainable Rivers Authority](#)

## 2.4 - Enhance community flood resilience



Where:	When:	Who:
<ul style="list-style-type: none"> <li>• Private residences</li> <li>• Council-owned buildings</li> </ul>	TBC	<ul style="list-style-type: none"> <li>• Minehead Town Council</li> <li>• Minehead Coast and Development Trust (MCDT)</li> <li>• Somerset Council</li> <li>• Somerset Rivers Authority (SRA)</li> <li>• Somerset Prepared</li> <li>• Communities Prepared</li> <li>• Minehead Rotary Club</li> </ul>

---

## **How:**

**Implement a community flood warden scheme:** Recruit and train volunteer flood wardens from the local community. These individuals can act as key points of contact during flood events and help disseminate information about flood preparedness. Work with the Environment Agency to establish or improve local flood warning systems. Ensure that alerts are widely accessible and understood by the community.

**Create educational resources:** Develop a range of educational materials about flood resilience measures for both residents and businesses. These could include leaflets, online resources, and video guides covering topics such as property-level flood protection, emergency planning, and insurance considerations. Organise workshops, talks, and hands-on events to educate residents about Natural Flood Management techniques and their benefits.

**Collaborate with businesses:** Identify and reach out to local businesses with expertise in water management and/or flood resilience. Organise a forum to discuss potential water retention strategies suitable for Minehead's specific needs and geography.

**Organise community workshops:** Host regular workshops and information sessions to educate residents and business owners about flood risks and resilience measures. Invite experts to share knowledge and demonstrate practical flood protection techniques.

**Create a flood resilience demonstration area:** Set up a public space showcasing various flood resilience measures, such as permeable paving, rain gardens, and property-level protection. Use this as an educational tool for the community.

**Encourage property-level resilience measures:** Provide guidance and potentially financial incentives for residents and businesses to implement property-level flood protection measures, such as flood barriers, non-return valves, and waterproof wall treatments.

**Conduct regular emergency planning exercises:** Organise and carry out flood scenario exercises involving local emergency services, the council, and community representatives to test and improve flood response plans.

**Monitor and evaluate resilience efforts:** Implement a system to track the uptake of flood resilience measures and their effectiveness during flood events. Use this information to refine and improve the community's flood resilience strategy over time.



## **Useful links:**

1. [Prepare for flooding - Government Website](#)
2. [Prepare against flooding - Somerset Rivers Authorities](#)
3. [Check for flooding - Government Website](#)
4. [Useful information about Somerset flooding - Sustainable Rivers Authority](#)



## 2.5 - Seek funding and partnerships



When:	Who:
TBC	<ul style="list-style-type: none"> <li>• Somerset River Authority (SRA)</li> <li>• Somerset Council</li> <li>• Wessex Water</li> <li>• Farming and Wildlife Advisory Group (FWAG) - Great Crested Newt Pond Scheme</li> <li>• Morrisons funding (up to £10,000)</li> <li>• Lush charity pot</li> <li>• Somerset Environment Fund</li> <li>• Hinkley Point grants</li> <li>• Chestnut Fund - grants for conservation</li> </ul>

## **How:**

**Explore funding sources:** Explore funding opportunities from environmental grants, government schemes, and partnerships with water companies or conservation organisations to support the implementation of natural flood management techniques and community flood resilience initiatives. This could include government grants, charitable trusts, or partnerships with water companies. Create a database of relevant funding opportunities and their application deadlines.

**Research ELMS opportunities:** Thoroughly investigate the Environmental Land Management Scheme (ELMS) and its potential application to water storage projects in Minehead. Establish a dialogue with the Department for Environment, Food and Rural Affairs (Defra) to better understand ELMS application processes and requirements. Seek guidance on how to optimise proposals for success.

**Organise stakeholder meetings:** Host regular meetings with potential funders and partners to discuss proposals, address questions, and build relationships. Consider organising site visits to demonstrate the need and potential impact of proposed projects.

**Initiate Wessex Water collaboration:** Reach out to Wessex Water to explore potential partnerships on water conservation schemes. Arrange meetings to discuss shared objectives and potential joint initiatives. Clearly articulate how partnerships and funded projects will benefit both Minehead and partner organisations like Wessex Water. This could include improved water security, reduced flood risk, and enhanced environmental outcomes.

**Build local support:** Engage the local community in the development of water management proposals. Organise public consultations and gather letters of support to strengthen funding applications and partnership proposals.

**Develop a monitoring and evaluation plan:** Create a robust plan for measuring the impact of funded projects. This will be crucial for reporting to funders and partners, and for securing future support.



## **Useful links:**

1. [Funding - The National Lottery Community Fund](#)
2. [The Environment Fund - Wessex Water](#)
3. [Hinkley Point C Community Fund - Somerset Community Foundation](#)

# 3. ENCOURAGING COMMUNITY-DRIVEN CLIMATE ACTION



Encouraging community-driven climate action in Minehead could provide the following adaptation benefits and co-benefits to the local community:



# 3.1 - Raise awareness and share knowledge on climate issues



Where:	When:	Who:
<ul style="list-style-type: none"> <li>• Community centre</li> <li>• Schools</li> <li>• Youth clubs</li> <li>• Minehead EYE</li> <li>• Quaker Meeting Hall</li> <li>• Regal Theatre</li> <li>• Dunster Castle</li> <li>• West Somerset Railway</li> <li>• Methodist church</li> <li>• Minehead Library</li> <li>• West Somerset College</li> <li>• Local farmers’ markets</li> <li>• Minehead Town Hall</li> <li>• Local parks and beaches</li> <li>• Doctor surgeries</li> </ul>	<p style="text-align: center;">TBC</p>	<ul style="list-style-type: none"> <li>• Minehead Town Council</li> <li>• Minehead and Coast Development Trust (MCDT)</li> <li>• Schools</li> <li>• Age UK</li> <li>• Minehead Wombles</li> <li>• Plastic Free Minehead</li> <li>• Youth clubs/Minehead EYE</li> <li>• Forest schools (Wild Wellies/Forest Catkins)</li> <li>• Minehead Shed</li> <li>• Down to Zero/Stacked Wonky</li> <li>• Home-Start West Somerset</li> <li>• Centre for Sustainable Energy (homeowner adaptation)</li> <li>• Local Community Networks (LCNs)</li> <li>• Carhampton Eco Group</li> <li>• Centre for Sustainable Energy</li> <li>• West Somerset Green Forum</li> </ul>

---

## How:

**Organise regular environmental talks and events:** Plan a series of talks and events covering various environmental topics. Invite local and national experts to speak, and consider hosting practical workshops on subjects like sustainable gardening or energy conservation. Regular informal gatherings like coffee mornings can also provide opportunities to share information and build community connections.

**Climate Champions initiative:** Identify and support passionate individuals who can serve as climate action champions. These champions can help drive engagement and build momentum within their respective networks and communities.

**Develop targeted awareness campaigns:** Create tailored campaigns for specific demographics and issues. For example, work with Age UK to develop a heat awareness campaign for the elderly, focusing on practical advice for staying cool during heatwaves. Build relationships with local newspapers, radio stations, and online platforms to regularly share climate-related news, tips, and success stories.

**Launch a permeable paving education campaign:** Develop informational materials explaining the benefits of permeable paving and available grants. Organise meetings with local building merchants to encourage them to recommend permeable paving options to customers. Provide them with informational materials and training on the benefits and installation of permeable surfaces. Use various channels including social media, local press, and community noticeboards to disseminate this information.

**Develop heatwave preparedness resources:** Create and distribute information packs on preparing for and coping with heatwaves. Include practical tips such as drawing curtains during the day and installing shutters. Ensure this information reaches vulnerable groups.

**Showcase successful nature-friendly projects:** Create a series of case studies highlighting successful nature-friendly projects from other areas. Share these through local media, social platforms, and at community events to inspire similar initiatives in Minehead.

**Establish a climate information hub:** Create a physical and online space where residents can access information on climate issues, local initiatives, and practical advice. This could be part of the local library or a dedicated community centre.



## Useful links:

1. [Five tips for living more sustainably - UN Environment Programme](#)
2. [Tips for encouraging sustainability in your community - Sustainable Living Association](#)
3. [9 Ways to be more sustainable at home - One Tree Planted](#)
4. [iNaturalist app information](#)
5. [Climate change IPCC report](#)

## 3.2 - Promote community involvement in environmental initiatives



When:	Who:
TBC	<ul style="list-style-type: none"> <li>• Minehead Town Council</li> <li>• Minehead Coast and Development Trust (MCDT)</li> <li>• Minehead Wombles</li> <li>• Plastic Free Minehead</li> <li>• Neighbouring communities e.g., Watchet and Porlock</li> <li>• Youth clubs/Minehead EYE</li> <li>• Forest schools (Wild Wellies/Forest Catkins)</li> <li>• Minehead Shed</li> <li>• Down to Zero/Stacked Wonky</li> <li>• Home-Start West Somerset</li> <li>• Centre for Sustainable Energy (homeowner adaptation)</li> <li>• Local Community Networks (LCNs)</li> <li>• Carhampton Eco Group</li> <li>• Landowners</li> <li>• National Trust</li> <li>• Woodcombe Community Woodland</li> <li>• West Somerset Green Forum</li> </ul>

## How:

**Create a Community Environmental Action working group:** Form a dedicated group of volunteers and council representatives to coordinate and oversee community environmental initiatives. Build strong connections with government bodies and other agencies to advocate for joined-up climate action.

**Create a community orchard:** Identify a suitable location for a community orchard. Work with local horticultural experts to select appropriate fruit tree varieties. Organise a community planting day and establish a volunteer group for ongoing maintenance.

**Organise regular litter picks:** Set up a schedule for monthly or quarterly litter picks throughout Minehead. Create an online sign-up system for volunteers and provide necessary equipment (litter pickers, gloves, bags). Partner with local businesses for refreshments or small rewards for participants.

**Develop a 'sponsor a square' programme:** Create a scheme where residents and businesses can sponsor sections of green roofs on public buildings. Design an attractive sponsorship package with recognition for contributors, such as plaques or an online 'green roof map'.

**Launch a 'green snowball' campaign:** Identify and showcase local businesses and residents who have successfully implemented environmentally friendly practices. Create case studies, organise 'green open house' events, and use social media to highlight these success stories.

**Protect existing natural spaces:** Create a volunteer 'Green Space Guardians' programme. Train volunteers to monitor and maintain local natural areas, reporting issues and organising community workdays.

**Promote a community environmental awards scheme:** Establish annual awards recognising outstanding contributions to local environmental initiatives. Categories could include best green business, most active volunteer, and most innovative eco-project.

**Foster collaborative governance:** Build strong partnerships between community groups, local government, energy suppliers, and designers to ensure coordinated climate action. Establish clear channels for community input into decision-making and avoid siloed thinking across agencies.



## Useful links:

1. [Somerset Prepared](#)
2. [Preparing for emergencies - Somerset Council](#)
3. [How to respond to planning applications: an 8-step guide - Campaign to Protect Rural England](#)
4. [Plastic free businesses - Plastic Free Minehead](#)
5. [Green forum - West Somerset Together](#)

# 3.3 - Improve community communication systems



Where:	When:	Who:
<ul style="list-style-type: none"> <li>• In-person communication               <ul style="list-style-type: none"> <li>◦ Minehead community centre</li> <li>◦ Local libraries</li> <li>◦ West Somerset College</li> <li>◦ Minehead EYE</li> <li>◦ Farmers’ markets and local events</li> </ul> </li> <li>• Online communication               <ul style="list-style-type: none"> <li>◦ Community websites</li> <li>◦ Social media platforms</li> <li>◦ Email newsletters</li> <li>◦ Online forums and groups</li> <li>◦ Local news websites</li> <li>◦ WhatsApp</li> </ul> </li> </ul>	<p>TBC</p>	<ul style="list-style-type: none"> <li>• Minehead Town Council</li> <li>• Minehead and Coast Development Trust (MCDT)</li> <li>• Minehead Wombles</li> <li>• Plastic Free Minehead</li> <li>• Neighbouring communities e.g., Watchet and Porlock</li> <li>• Youth clubs/Minehead EYE</li> <li>• Forest schools (Wild Wellies/Forest Catkins)</li> <li>• Minehead Town Council</li> <li>• Minehead Shed</li> <li>• Down to Zero/Stacked Wonky</li> <li>• Home-Start West Somerset</li> <li>• Centre for Sustainable Energy (homeowner adaptation)</li> <li>• Local Community Networks (LCNs)</li> <li>• Carhampton Eco Group</li> <li>• National Trust</li> <li>• West Somerset Green Forum</li> </ul>



---

## **How:**

**Collaborate to create a communications plan:** Form a working group of local council members, community leaders, and communication expertise to oversee the development and implementation of climate communication strategies.

**Develop a climate digital hub:** Create a comprehensive online platform, to serve as a central resource for climate-related information and initiatives in Minehead. Design the website structure to include sections for local climate news, upcoming events, educational resources, and links to local environmental groups.

**Create a physical information hub:** Identify a suitable location, such as the library or community centre, to establish a physical information point for climate initiatives. Set up an information stand with regularly updated leaflets, posters, and contact details for local environmental groups.

**Rebrand climate activities:** Work with local marketing professionals or students to develop appealing branding for climate activities that resonate with a broader audience.

**Promote awareness of established groups:** Develop a promotional campaign to increase visibility of existing environmental groups like Plastic Free Minehead. Organise a 'Meet the Green Groups' event where residents can learn about and sign up for various local initiatives.

**Establish a regular communication schedule:** Develop a consistent communication plan to keep the community informed and engaged. Create a monthly e-newsletter highlighting local climate action news and upcoming events.

**Develop a community climate ambassador programme:** Recruit and train volunteers to serve as climate ambassadors within their neighbourhoods or social circles.

**Implement feedback mechanisms:** Ensure there are clear channels for community members to provide feedback and suggestions on climate communication efforts. Set up a dedicated email address or online form for climate-related feedback.



## **Useful links:**

1. [Five ideas for building effective relationships between community organizations, governments, and businesses - Maytree](#)
2. [Building and maintaining relationships with your local authority - Advice Services Alliance](#)
3. [Climate Adaptation Toolkit - Somerset Wildlife Trust](#)

# 3.4 - Partner with educational institutions



When:	Who:
TBC	<ul style="list-style-type: none"> <li>• Minehead Town Council</li> <li>• Minehead Coast and Development Trust (MCDT)</li> <li>• Centre for Sustainable Energy</li> <li>• West Somerset College</li> <li>• Minehead Middle School</li> <li>• Minehead First School</li> <li>• St Michael’s Church of England First School</li> <li>• Minehead First School Nursery</li> <li>• Minehead EYE</li> <li>• Youth clubs</li> <li>• Brownies</li> <li>• Scouts</li> <li>• Somerset Wildlife Trust (SWT)</li> </ul>

---

## How:

**Collaborate to create an education plan:** Form a working group comprising representatives from local schools, the town council, and environmental experts to oversee educational climate initiatives. Develop educational programmes and resources for local schools and youth organisations to engage young people in climate issues and solutions.

**Implement climate adaptation projects in schools:** Work with schools to create climate-resilient gardens or outdoor learning spaces. Support the installation of water butts, rain gardens, or other sustainable drainage features on school grounds.

**Engage nurseries in climate activities:** Develop simple, age-appropriate activities for young children, such as growing plants or creating wildlife habitats. Provide resources and training for nursery staff on incorporating climate themes into early years education.

**Organise climate action idea competitions:** Launch an annual competition for young people to submit innovative climate action ideas for Minehead. Establish different age categories to ensure participation across all school levels.

**Promote citizen science projects:** Research existing citizen science projects relevant to climate change and local environmental issues. Adapt these projects for local implementation or develop Minehead-specific projects.

**Develop a climate champions programme:** Establish a programme where students can become 'Climate Champions' in their schools. Provide training and resources for these champions to lead climate initiatives and educate their peers.

**Create inter-school climate networks:** Facilitate regular meetings or events where students from different schools can share their climate project experiences and ideas.

**Implement a 'Green Schools' certification scheme:** Develop a local certification scheme that recognises schools' efforts in climate education and adaptation. Establish criteria for certification and provide support for schools to achieve their 'Green School' status.

**Engage with higher education institutions:** Partner with nearby colleges or universities for mentorship programmes, where older students can guide pupils in climate projects.



## Useful links:

- [1. Minehead and Alcombe Scout Group - Somerset Scouts](#)
- [2. Education is key to addressing climate change - United Nations](#)
- [3. Organisations that can help you take action - Let's Go Zero](#)
- [4. Grants and funds for your local group - Scouts UK](#)
- [5. Scout Group funding - Baker-Mill Foundation](#)
- [6. Schools climate action planner - Transform Our World](#)

# 4. PROMOTING SUSTAINABLE DEVELOPMENT



Promoting sustainable development in Minehead could provide the following adaptation benefits and co-benefits to the local community:



# 4.1 - Improve existing housing



When:	Who:
TBC	<ul style="list-style-type: none"><li>• Minehead Town Council</li><li>• Minehead and Coast Development Trust (MCDT)</li><li>• Somerset Council</li><li>• Centre for Sustainable Energy</li><li>• Local MP</li><li>• West Somerset Community Land Trust</li></ul>

---

## How:

**Establish a Sustainable Housing working group:** Form a dedicated group comprising local council members, housing experts, environmental professionals, and community representatives to oversee and coordinate housing improvement initiatives.

**Create an online information hub:** Develop a dedicated section on the town council website or local climate action platform for housing improvement resources. Include easy-to-understand guides on different retrofitting options, their benefits, and approximate costs. Provide case studies of local homes that have successfully implemented improvements, including details on energy and cost savings.

**Organise regular information-sharing events:** Host monthly or quarterly talks on various aspects of sustainable home improvements, inviting local and national experts to present. Arrange 'open home' events where residents who have implemented sustainable measures can showcase their improvements to neighbours. Organise practical workshops on topics such as draught-proofing, insulation installation, or setting up water conservation systems.

**Develop a retrofitting programme:** Create an information pack on energy efficiency and water conservation measures suitable for local housing types. Research and compile a list of local certified contractors experienced in sustainable retrofitting. Partner with local colleges or training providers to develop courses in sustainable construction and retrofitting. Encourage local tradespeople to upskill in green technologies and techniques. Investigate potential funding sources or grants available for home improvements and create a guide for residents.

**Promote water conservation measures:** Partner with local suppliers to offer discounted water butts to residents. Develop a guide on installing and maintaining rainwater harvesting systems, tailored to local housing types. Create an information leaflet on simple greywater reuse systems that homeowners can implement.

**Develop a local green homes grant scheme:** Work with the council to establish a small grants programme for home sustainability improvements. Create a simple application process and clear criteria for eligible improvements. Showcase successful projects to encourage wider participation.

**Implement a community bulk-buying scheme:** Organise group-buying initiatives for common retrofitting materials or technologies to reduce costs for residents. Negotiate with suppliers for discounts on sustainable home improvement products.



## Useful links:

1. [Integrating climate adaptation: a toolkit for urban planners and adaptation practitioners - C40 Knowledge Hub](#)
2. [Glasgow city region case study - Sniffer](#)
3. [A practical guide to climate-resilient buildings & communities - UN](#)
4. [Technical guidance and Best Practice Guidance for adapting buildings to climate change - EU](#)
5. [Adapting buildings guidance - Climate Just](#)



## 4.2 - Advocate for climate-resilient new developments



Where:	When:	Who:
<ul style="list-style-type: none"> <li>• Rainbow Way</li> <li>• Emerging developments in Minehead</li> </ul>	<p>TBC</p>	<ul style="list-style-type: none"> <li>• Minehead Town Council</li> <li>• Somerset Council</li> <li>• Centre for Sustainable Energy</li> <li>• Local MP</li> <li>• West Somerset Community Land Trust</li> <li>• Local house builders</li> <li>• Developers</li> </ul>

## **How:**

**Establish a Sustainable Development working group:** Form a working group comprising town councillors, planning experts, environmental professionals, and community representatives to spearhead efforts for climate-resilient new developments, prioritising sustainable transport infrastructure and brownfield development.

**Review and update local planning policies:** Draft proposed updates to the Local Plan that include stricter environmental standards for new builds, incorporating mandatory renewable energy systems, enhanced insulation requirements, and integrated sustainable transport links. Consider possible enforcement mechanisms with penalties for non-compliance.

**Create a sustainable building guide:** Develop a comprehensive guide outlining local requirements for sustainable building practices. Include case studies and examples of best practices from leading countries in sustainable development.

**Establish a planning application review process:** Set up a dedicated group to review all planning applications with a specific focus on environmental impact and climate resilience. Include transport accessibility criteria in development assessments.

**Promote green infrastructure:** Develop guidelines for the inclusion of green roofs, increased green spaces, and sustainable drainage systems (SuDS) in new builds.

**Monitor and evaluate progress:** Track climate-resilient features in new developments and conduct annual reviews of planning policy impacts.

**Engage the community:** Organise public consultations on proposed changes to planning policies and create feedback mechanisms for residents.

**Develop a Business Climate Charter:** Create a voluntary pledge programme for local businesses to commit to sustainable practices, including supporting sustainable transport options.

**Champion integrated transport planning:** Work with transport authorities to ensure new developments enhance sustainable transport networks, including public transport routes and active travel infrastructure.



## **Useful links:**

1. [How to respond to planning applications: an 8-step guide - Campaign to Protect Rural England](#)
2. [Influencing the planning process \(England\) - Commons Library](#)
3. [Information requirements for planning applications - Somerset Council](#)
4. [A practical guide to climate-resilient buildings & communities - UN](#)
5. [Technical guidance and best practice guidance for adapting buildings to climate change - EU](#)
6. [Adapting buildings guidance - Climate Just](#)





# 4.3 - Engage businesses in sustainability



When:	Who:
TBC	<ul style="list-style-type: none"> <li>• Minehead Town Council</li> <li>• Minehead and Coast Development Trust (MCDT)</li> <li>• Our Precious Earth</li> <li>• Plastic Free Minehead</li> <li>• Minehead Chamber of Commerce</li> <li>• Somerset Council</li> <li>• Local Farmers’ Markets</li> <li>• Exmoor National Park Authority</li> <li>• Minehead Together</li> </ul>

## How:

**Establish a Sustainable Business Network:** Create a local network of businesses interested in sustainable development to facilitate knowledge sharing and collaboration.

**Engage with local businesses:** Conduct a survey of local businesses to understand their current sustainability practices and challenges. Organise one-to-one meetings with key business leaders to discuss sustainability opportunities. Host regular networking events focused on sustainable business practices.

**Develop a Sustainable Business Charter:** Create a local charter outlining key sustainability principles for businesses. Establish different levels of accreditation based on sustainability achievements. Offer recognition and publicity for businesses that sign up for the charter.

**Provide sustainability consultations:** Offer free initial sustainability assessments for local businesses. Partner with environmental consultants to provide in-depth advice at discounted rates.

**Create a sustainable business guide:** Develop a comprehensive guide tailored to local businesses on implementing sustainable practices. Include case studies of successful local initiatives to inspire others. Regularly update the guide with new information and best practices.

**Implement a green innovation challenge:** Launch an annual competition for local businesses to present innovative sustainability solutions. Offer seed funding or support services to help implement winning ideas.

**Promote green finance options:** Partner with local banks or financial institutions to offer preferential rates for sustainable investments. Provide information on available grants and funding for sustainability projects. Host seminars on the financial benefits of sustainable business practices.

**Recognise and celebrate success:** Establish annual Sustainable Business Awards to recognise outstanding achievements. Feature success stories in local media and council communications. Create a 'Sustainable Business Trail' showcasing exemplary businesses to the public.



## Useful links:

- [1. Plastic free businesses - Plastic Free Minehead](#)
- [2. Minehead and local business group - Facebook](#)
- [3. Our Precious Earth \(local business\)](#)

## 4.4 - Implement innovative funding and incentive schemes



When:	Who:
TBC	<ul style="list-style-type: none"><li>• Green Homes Grant</li><li>• Industrial Energy Transformation Fund (IETF)</li><li>• Green Business Fund - Carbon Trust</li><li>• Community Energy Fund</li><li>• Rural Community Energy Fund (RCEF)</li><li>• Low carbon workspaces</li><li>• Energy Entrepreneurs Fund</li><li>• Lendology</li></ul>

---

## How:

**Establish a Green Finance Working Group:** Form a dedicated team comprising local council members, finance experts, environmental professionals, and community representatives to develop and oversee innovative funding and incentive schemes.

**Research existing grant schemes:** Conduct a comprehensive review of national and regional grant programmes for sustainable adaptation. Compile a database of available grants, their eligibility criteria, and application processes. Identify any gaps in funding that could be addressed through local initiatives.

**Develop a local green grant programme:** Work with the town council and local businesses to establish a fund for supporting green initiatives in Minehead. Create clear guidelines for eligibility, focusing on projects that align with local climate adaptation and mitigation goals. Implement a straightforward application and assessment process to encourage widespread participation.

**Establish a green business recognition programme:** Develop a local certification or award scheme for businesses that adopt green technologies or achieve high environmental standards. Offer incentives such as free publicity, networking opportunities, or priority in local government procurement processes for certified businesses.

**Develop a local green skills training programme:** Partner with local colleges or training providers to offer courses in green technology installation and maintenance. Provide subsidies or grants for residents to undertake these courses, building local capacity for green jobs.

**Create a revolving loan fund for energy efficiency:** Establish a low-interest loan programme for homeowners and businesses to finance energy efficiency improvements. Structure repayments so that they can be made through savings on energy bills, making the scheme accessible to a wide range of participants.



## Useful links:

- [1. Green finance - Government website](#)
- [2. Funding - The National Lottery Community Fund](#)
- [3. The Environment Fund - Wessex Water](#)
- [4. Hinkley Point C Community Fund - Somerset Community Foundation](#)

# CONCLUSION

**This plan shares the community’s priority actions for helping Minehead thrive through our changing climate. Some can happen quickly, like planting trees, to give an instant adaption boost. Other actions, such as shaping planning policies, are longer-term projects that will significantly enhance Minehead’s adaptation and preparedness.**

Every action in this plan will also bring many other benefits to Minehead. These “co-benefits” include:

- improving community health and wellbeing
- making space for wildlife
- mitigating climate change

By working on these actions together, you can also strengthen community links, which is vital for making the town well-adapted and resilient.



Minehead’s Climate Adaptation Plan should be seen as a living document, at the starting point of a wider process. The plan should:

- be reviewed regularly.
- be updated as needed.
- reflect the changing climate and the changing priorities and needs of Minehead’s community.

By staying flexible, and continuing to listen to Minehead’s residents, the plan can best guide the community in adapting to climate change.

## Now it is time to act!

**Everyone can play a role in making Minehead better adapted. To find out more about how you can get involved in implementing this plan, contact Somerset Wildlife Trust.**

# Acknowledgements

Thank you to everyone who shared their ideas to create such a positive and ambitious Climate Adaptation Plan for Minehead. In addition to the many community members who shaped this plan, we would like to thank [Zara Aitken](#), [Ray Tew](#) and [Maya Clayden](#) from Minehead and Coast Development Trust (MCDT) for their work to develop Minehead's Climate Adaptation Plan.

If you are concerned about your individual preparedness to emergency events, check out [Somerset Prepared](#) for detailed advice and support.

For future funding, the Somerset Rivers Authority are launching a grant scheme toward flood action projects - launching in January 2025.



**Published January 2025, Review Date January 2027**

## Contact

### Minehead and Coast Development Trust

Zara Aitken

[zara@mineheadandcoast.org.uk](mailto:zara@mineheadandcoast.org.uk)



This work is part of the 'Somerset's Wilder Coast' project, generously funded by the National Lottery Climate Action Fund and the HPC Community Fund.



### **Disclaimer**

*The links provided in this document are intended to serve as information and advice, and do not reflect a recommendation from Somerset Wildlife Trust, or our partners and funders, for particular companies, products or services.*

# Consultation responses to improving green spaces



Locals in Minehead highlighted the need for child-focused initiatives to improve green spaces, including events teaching kids about nature, creating nature trails, and encouraging forest school play. They advocated for planting bug-friendly plants, and stressed making parks safer for children. Suggestions also included better communication with younger generations and maintaining green spaces by keeping them clean. These ideas aim to foster youth engagement and accessibility.

Locals emphasised better management and awareness of green spaces in Minehead. Key points included promoting litter-picking and responsible dog ownership, providing more bins, and encouraging locals to adopt empty spaces for planting. The importance of maintaining existing spaces was highlighted, as well as preserving natural areas like Bratton Walk, and addressing dead trees. Improved awareness campaigns were proposed to highlight green spaces' benefits for nature and mental health, ensuring accessibility, and nurturing spaces for community use.



Locals in Minehead shared ideas for enhancing green spaces, such as opening overgrown areas, like Holloway Street, to the public and preserving trees on The Avenue and the seafront. Ideas ranged from a park with exotic plants to fostering inclusivity in green spaces. Volunteers clearing footpaths and community-led woodland trails for families were also encouraged.

Careful development and funding strategies were called for to protect green spaces. Building on farmland, floodplains, and existing green areas was opposed, emphasising the need to align planning with government strategies while considering local needs. Suggestions included investing in forest gardens, agroforestry projects, and tree planting. Crowdfunding was proposed to acquire and maintain community spaces, ensuring local ownership.



Minehead residents value protecting local wildlife and proposed the creation of green corridors by linking existing spaces, allowing species to move freely. They encouraged leaving parts of gardens wild to support biodiversity and expanding woodland areas for nature and community enjoyment. Keeping spaces clean and planting native species were seen as key steps to nurture habitats. Ensuring animals like badgers and foxes can burrow and find food was also identified as an important consideration for wildlife conservation.

# Consultation responses to reducing flood risks



Minehead locals advocated planting more trees and hedges, particularly in upland areas, to reduce flooding risks. They stressed the importance of maintaining clear drains and ditches to manage water flow effectively. Reducing concrete surfaces and increasing planted areas to improve water absorption were also highlighted as priorities. Additionally, preserving existing trees by halting unnecessary felling was seen as essential for managing flood risks while enhancing the town's natural resilience to heavy rainfall.

40% of responses mentioned drainage as a priority. This included regularly clearing drains, particularly in Autumn, and monitoring their maintenance. Managing runoff from hills and keeping drainage ditches clear of invasive weeds and debris were also highlighted. Residents called for increased funding to improve drainage systems and protect homes, stressing the importance of proactive measures to address flood risks in the area



Proactive measures to manage water flow and reduce flooding were proposed. Suggestions included clearing waterways and streams of debris and avoiding excessive concreting of driveways. Early seasonal maintenance was encouraged, with collaboration between street groups and residents. Additional ideas included creating flood relief ponds, and installing leaky dams upstream. Promoting water conservation tools like water butts was also recommended to alleviate flood risks.

Residents expressed varied awareness of flooding risks, noting issues like tidal flooding, heavy rainfall, and future sea level rise. Some were uncertain about specific risks and solutions, suggesting more education on prevention and the impacts of climate change. Ideas included signage to protect beach outlets, encouraging controlled flooding in designated areas, and promoting available support, such as help from groups like Minehead Rotary Club. Highlighting risks for town centre businesses was also recognised as essential for preparedness.



Development on flood plains and marshland was opposed, demonstrating the need to protect natural drainage systems. Residents called for improved road and drain maintenance, highlighting the importance of keeping drains clear to prevent flooding. There was also concern over reducing construction on fields and the loss of trees. Ensuring accessible roads into and out of Minehead was considered crucial, alongside maintaining the natural environment to mitigate flood risks and preserve the area's resilience.



---

## Consultation responses to community action



Minehead residents stressed the importance of engaging youth in community-driven climate action. Suggestions included organising fun, educational events to enhance children's understanding of environmental issues and involving schools to promote climate awareness. Increased focus on litter picking and maintaining public spaces, alongside education initiatives, was seen as key to promoting responsibility and engagement among young people. These efforts aim to build a sense of community while empowering the next generation to be involved with climate action.

The town's strong community spirit was recognised as a powerful tool for climate action. Encouraging a sense of ownership by involving everyone in initiatives was seen as key to participation. Ideas ranged from identifying and empowering champions to lead projects to improving communication between groups, particularly through social media. Inclusivity and collaboration were emphasised as essential to fostering widespread involvement and ensuring that all residents feel inspired and confident to contribute to climate-focused efforts.



Concerns about community-driven climate action were raised, with some unsure of its potential impact on a global issue. A perceived lack of support from local government authorities for community projects was noted, along with limited awareness of existing initiatives. There was also frustration over ongoing development, highlighting the need to prioritise sustainability. These concerns reflect the importance of improving communication, securing support, and demonstrating the value of local efforts in addressing broader environmental challenges.

A priority raised by residents was the need for government-led climate action with coordinated efforts across agencies, designers, and energy suppliers. They called for accountability and collaboration, as well as clear, integrated planning at all levels to ensure effective and impactful solutions, aligning local initiatives with broader national and global climate goals.



Various ideas were proposed to support climate action, including reducing plastic waste and encouraging cafes to eliminate disposable cups for dine-in drinks. Planting more trees and shrubs, promoting composting to reduce bonfires, and hosting coffee mornings for awareness and advice were also suggested. Renewable energy initiatives, like researching wind and tidal power and increasing solar panel use on public buildings, were also highlighted. Community-led projects were seen as more impactful than individual efforts.

# Consultation responses to sustainable development



Locals raised concerns about sustainable development, describing the strain on healthcare and education resources, particularly with limited medical facilities and school places. They questioned the impact of new housing on flooding and the prevalence of second homes. The need for affordable rental properties was noted, but only with adequate infrastructure to support growth. Calls were made for long-term, strategic planning to address these issues.

A clear housing plan was seen as essential, with penalties for developers who alter agreed terms. Participants stressed the importance of rigorous planning processes, prioritising carefully chosen building locations, insulation, and renewable energy. Reducing bureaucracy and ensuring government leadership were also identified as crucial steps to create sustainable developments that align with community priorities.



The consultations involved calls for all new homes to include solar panels. Participants suggested prioritising higher-density housing, such as terraced houses or 3-4-story flats, to minimise heat loss and reduce land use. Emphasis was placed on designing energy-efficient homes and integrating sustainable transport links to maximise environmental benefits. These steps were seen as having the most immediate and significant impact on the area's sustainability.

Development efforts should address the needs of all generations and focus on shared responsibility for sustainability. Having attractive housing on brownfield sites over green belt land was highlighted. Repurposing existing structures was suggested as a preferable alternative to new builds. Providing greater support for improving older housing in villages was also seen as an important consideration to ensure environmentally conscious development across the community.





Improving public transport and creating better cycle routes were seen as essential steps toward sustainability. Locals discussed initiatives like developing a public swimming pool and skate park, building a greenhouse for growing plants and vegetables, and welcoming local wildlife such as badgers and frogs. Collaborating with organisations like the National Farmers Union and encouraging businesses to adopt sustainable practices through pledges were also mentioned.

## Adaptation Map



Areas suggested by residents:

-  Priority 1 - improving and increasing green spaces.
-  Priority 2 - reducing flooding risks.